

Due to open in January 2011, the Stockholm Waterfront Congress Centre has been designed to provide a venue for a wide variety of events, both national and international. As a congress hall it will cater for up to 3,000 delegates, but will also provides the city with a major exhibition venue as well as a concert hall.

**Client:** Peab AB  
**Scope:** 1750 sq m Tension Wire Grid on six levels covering the whole auditorium  
**View at:** [www.waterfrontbuilding.se](http://www.waterfrontbuilding.se)

**Unusual was contracted to design, manufacture and install a 1750 sq m modular tension wire grid:**

- 173 custom designed and built panels to architect specified arrangement
- 2.5kN per square metre load capacity
- 6 levels, with balustrades, stairs and vertical safety nets between each level
- 40,000m of 4mm stainless steel wire rope manufactured into 18,000 individual ropes

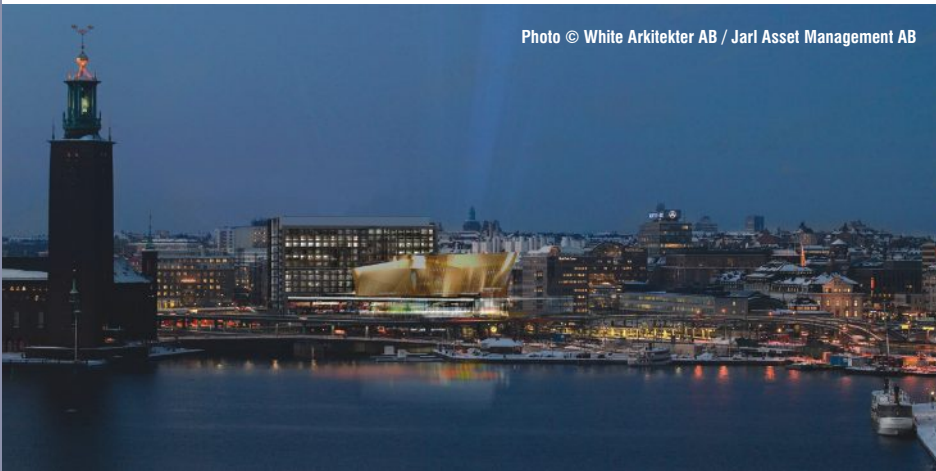
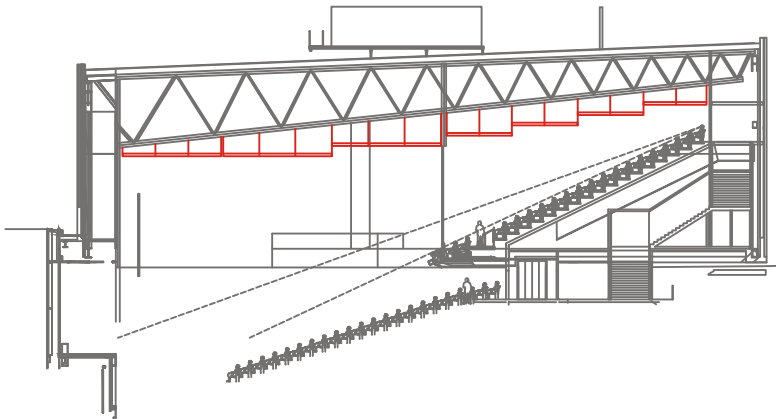


Photo © White Arkitekter AB / Jarl Asset Management AB

