

engineered solutions

consultancy

design

fabrication

installation



Head Above Water, London

Photo © Daniel Shearing/Stora Enso/Ramboll



## Marches, Musicals, Masterpieces, Mental Health

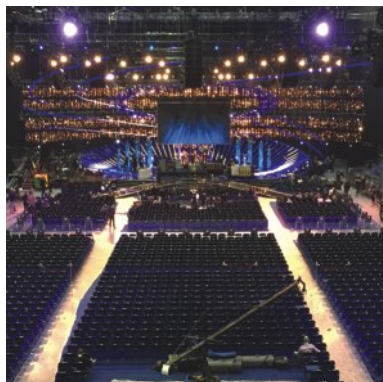
We are as diverse as we are Unusual – in the last year alone, we've been involved in some amazing, unique projects – so many one-offs that you'd struggle to put us into one box. Yes, we work on some of the biggest musical theatre productions, on tour and in the West End. Yes, we were behind the logistics of the Suffragette march through London in 2018. Yes, it was us craning two enormous slugs onto plinths outside Tate Britain just before Christmas. And yes, we were the people responsible for erecting and positioning a giant head on the banks of the Thames as part of a campaign to raise awareness of mental health. So what is the one common denominator here? It's 'Yes'. As a company we're as famous for saying 'Yes' as we are for our rigging expertise. You want us to fit a seemingly impossible amount of kit into an extremely small venue for your production? Perhaps you want us to hang aircraft or spacecraft safely and securely in your museum, but you want it to look as though it's just floating? Perhaps you need to shut down some of the busiest streets in London so that your event can take place safely but with minimal inconvenience to traffic and business owners? Whatever it is you want to achieve, the chances are that we can make it happen. See for yourself just what we're capable of as you look through this brochure. Then get in touch to hear us say 'Yes' to you!

*“When we were told that Unusual was the best of the best, we knew we wanted them to be part of this project. So professional, taking everything they do to an incredible level, great fun and super nice. Nothing was too much trouble - and that is Unusual.”*

Natalie Alexopoulos,  
Director, Steuart Padwick,  
Head Above Water



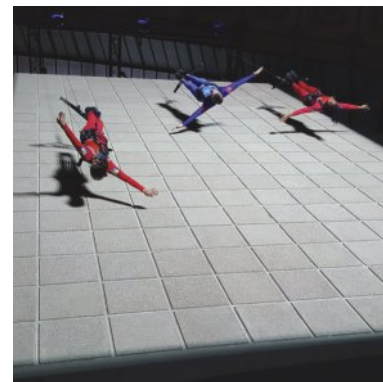
Seabourn Ovation naming ceremony



Sports Personality of the Year



Matilda The Musical



Streb Extreme Action



Waitress



# ENTERTAINMENT

Magic Mike Live!  
Photos: Trevor Leighton





The world of theatre continues to amaze us. Despite the fact that we've been in the business for years, today's demanding productions and tours never cease to present us with challenges. As productions compete to be ever more elaborate and spectacular, so the demands become more complex, shows get heavier and the amount of staging and scenery increases. What we don't get are new venues designed specifically to take these shows. A huge part of the magic of a visit to the theatre in the UK is to step back in time to a venue built over a hundred years ago – beautiful, intricate buildings – venues which are certainly not designed for a modern 21st century show. While we're regularly required to devise systems that make props fly, or create some amazing special effects, we're just as often asked how can we fit this massive production into a tiny venue....and we've not failed yet.

Perhaps the most demanding show we've ever had to squeeze into a venue is Magic Mike Live! The extravagant, cabaret style show, staged at the Hippodrome Casino on Leicester Square is incredibly complex. TAIT UK brought us on board to help design and supply a full package of diversions and fixings and to supply all the trusses too. This involved:

- a full survey of the roof – some very old architectural drawings of the venue existed but none gave any information about the roof and its weight loading capabilities
- installing eighteen winches where previously TAIT UK had said installing a single winch was 'a nightmare'
- devising a flawless diversion system, allowing us to lower and raise a splash pool, tracking it off stage and out of the way of the performer flying points.

*“We really have to praise the entire Unusual team for their patience and tenacity in a hugely challenging environment where they succeeded in pulling off something amazing. Such is the magic of theatre, you'd never know what they'd done or just how much work they put in to make this show possible.”*

Alex Hitchcock,  
Operations Director, TAIT UK



All About Eve



Richard III



Les Misérables



Matilda The Musical



Come From Away



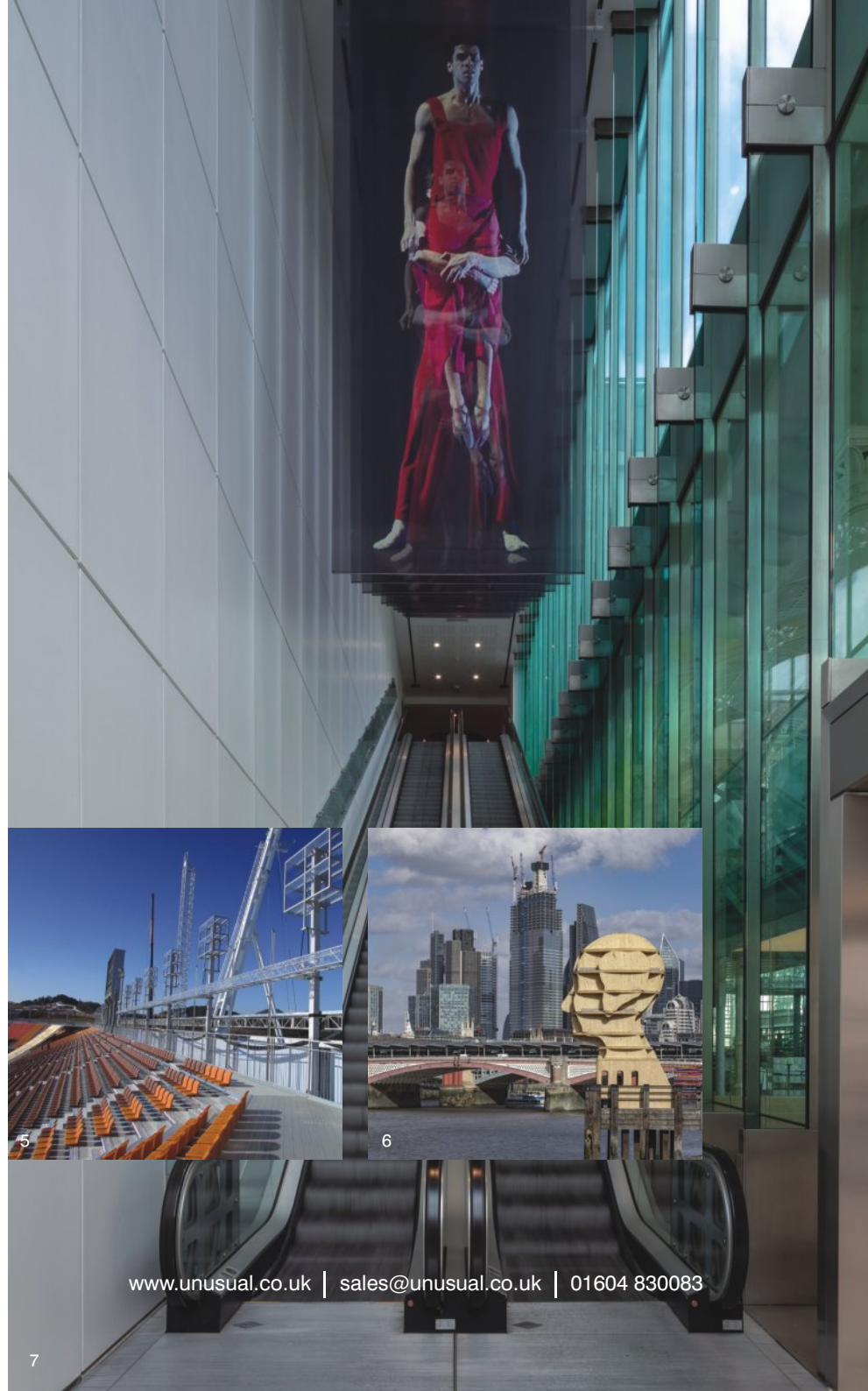
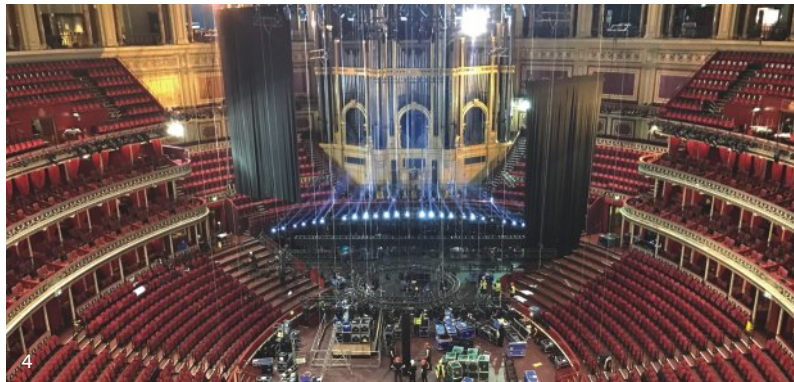
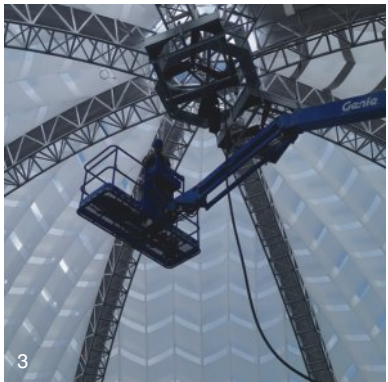
# SIGNIFICANT OTHERS

Laureus Awards 2019

Photos: Getty Images for Laureus







1 – Regent Street Christmas Lights. 2 – The Processions, London. Photo: Sheila Burnett.  
 3 – RHS Chatsworth Flower Show. Photo: Tim Sandall. 4 – Olivier Awards. Photo: Lee Batty.  
 5 – PyeongChang Games 2018. 6 – Head Above Water. Photo: Daniel Shearing/Stora Enso/Ramboll.  
 7 – Scrims at Royal Opera House. Photo: ROH.

[www.unusual.co.uk](http://www.unusual.co.uk) | [sales@unusual.co.uk](mailto:sales@unusual.co.uk) | 01604 830083





# MUSEUMS & GALLERIES



Over the past couple of decades museums and galleries have shrugged off their reputation as dull and stuffy to become family friendly, interactive places where visitors have the opportunity to get up close and personal with artefacts and exhibits. In a word, today's museums are 'cool'. And we're more than happy to take credit for some of that. We do a lot of work in museums and the hurdles these venues pose are anything but boring – whether it's installing giant 8m tall slugs on the plinths outside Tate Britain, hanging astronaut Sir Tim Peake's capsule in various venues across Britain or displaying some breathtaking aircraft from the two World Wars so that they fly above the heads of visitors.

This is exactly what we did at the RAF Museum in Hendon, North London. The new exhibition exploring the first 100 years of the RAF and also its future, was installed to tie in with the organisation's centenary. We've hung countless aircraft over the years but this project was probably the most ambitious to date.

For this prestigious project we:

- hung over 30 tonnes of aircraft from the roof of Hangar Six including a Eurofighter, a Harrier, a Tornado and a Predator, all requiring some very innovative rigging solutions and well thought out weight distribution
- mounted a DH9 and a Spitfire on steel columns in Hangar One
- overcame the challenge of displaying the model of a Lockheed Martin F-35 Joint Strike Fighter. This giant craft was to be displayed at height above an access route – we couldn't use columns, we couldn't hang from the roof – so we had to be really creative. The solution involved hidden works in the foundations and walls of the hangar, enabling the plane to levitate effortlessly above visitors' heads.

*“We have worked with Unusual Rigging on many projects over the past years, all of different scales. No challenge is too big or small for them, from hanging First World War fragile aircraft, to a Typhoon, to a wind tunnel model. Their team is always skilled and reliable, delivering our vision brilliantly and ensuring the safety of our collection and visitors.”*

Angela Vinci, Architect,  
Head of Exhibitions and Interpretation,  
Royal Air Force Museum

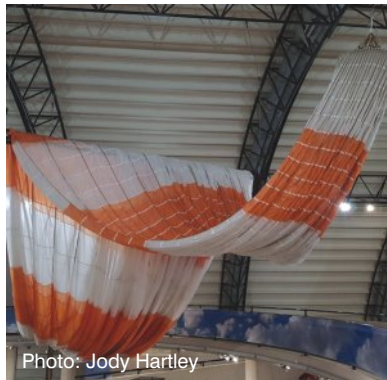


Photo: Jody Hartley

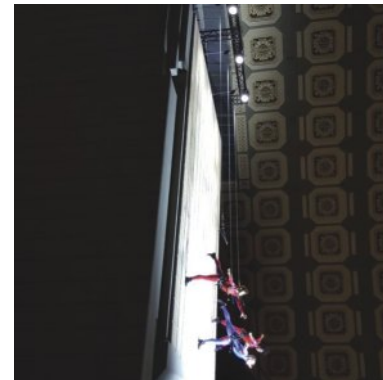
Sir Tim Peake's Soyuz Capsule, Bradford Science Museum



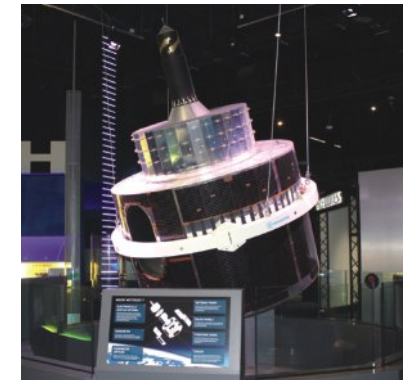
Tate Britain seasonal decorations



Bepi Colombo, Science Museum, London



Streb event, Musee D'Orsay, Paris



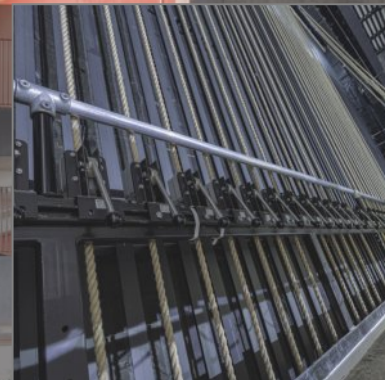
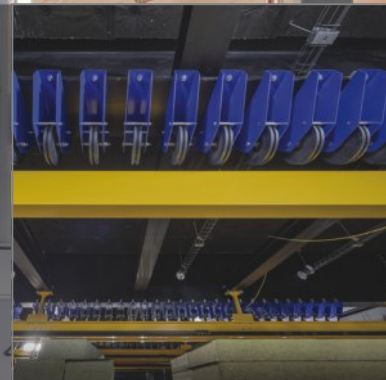
Meteosat, Matopma; Space Centre, Leicester





# ENGINEERING

English National Ballet  
Photos: Michael Malloy for ENB





Our portfolio of engineering projects is, even by our standards, impressive. Our expertise is evident across a vast range of sectors, including railway stations, theatres, conference centres, opera pavilions. One thing they all have in common is that time is rarely on our side. That's not a problem – many of our projects see us brought in, for a variety of reasons, at the 11th hour.

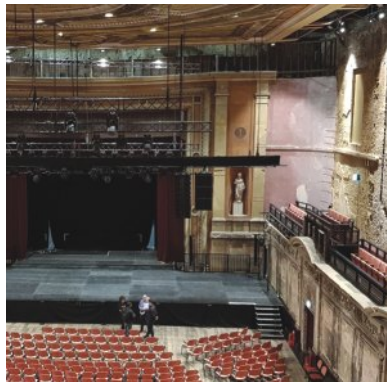
So we are delighted to be able to talk about a project on which we have been involved with since the beginning, in 2014, and on which we were employed as theatre consultants for the first time.

In 2019, English National Ballet and English National Ballet School relocated to a new, state-of-the-art space on London's City Island. In addition to our role as theatre consultants, we were subsequently awarded the tender, by BW Workplace Experts, for the design and installation of the technical equipment. Thanks to our involvement from day one, we have been able to work closely with the constructors, Ballymore, on every aspect of the building. This has allowed us to:

- advise on everything from where to put all the steel in the roof for the flying system, to where to place the big beams for the galleries etc.
- provide continuity, thus avoiding having to make changes to or redesign any aspect of the project
- specify the right type of technical floor for the rehearsal areas
- ensure that due consideration was given to ongoing access via the loading bay
- deliver our part of the project on time and to budget.

***"It's unusual... for a member of a design team to also deliver the construction of a building. But this is exactly what has made Unusual Rigging such an extraordinary asset to the English National Ballet's capital project."***

Patrick Harrison, Executive Director,  
English National Ballet



Alexandra Palace

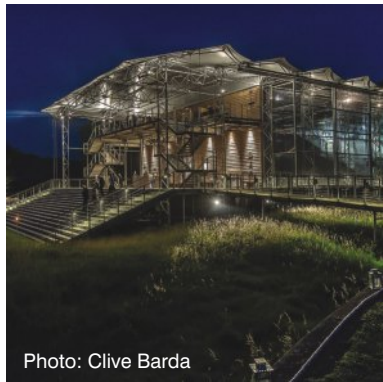
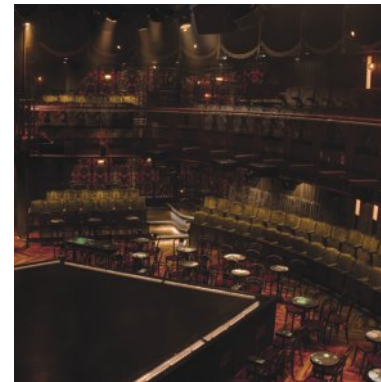


Photo: Clive Barda

Garsington Opera Pavilion



Bristol Hippodrome



Hippodrome Casino,  
Leicester Square

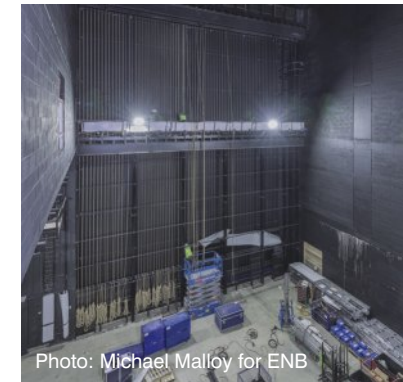
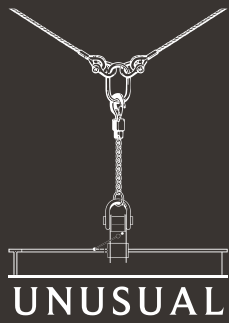


Photo: Michael Malloy for ENB

English National Ballet





Unusual Rigging Ltd  
The Wharf  
Bugbrooke  
Northamptonshire  
NN7 3QB  
UK

Tel: +44 (0)1604 830083  
[sales@unusual.co.uk](mailto:sales@unusual.co.uk)  
[unusual.co.uk](http://unusual.co.uk)